

# DMR-EZ47 Firmware Installation Instructions

## Table of Contents

	<b>Table of Contents</b> .....	<b>1</b>
<b>1</b>	<b>Firmware History</b> .....	<b>2</b>
	1.1 Applicable Models .....	2
	1.2 Purpose .....	2
<b>2</b>	<b>Download Firmware</b> .....	<b>3</b>
<b>3</b>	<b>Burn Firmware</b> .....	<b>4</b>
	3.1 Windows® OS CD Writing Program .....	4
	3.2 Other OS CD Writing Program.....	5
	3.3 3 <sup>rd</sup> Party CD Burning Software .....	5
	3.4 Dragging & Dropping .....	6
<b>4</b>	<b>Install Firmware</b> .....	<b>7</b>

# 1 Firmware History

## 1.1 Applicable Models

DMR-EZ47, DMR-EZ475

Includes models with suffix K, S, V, VK, VP, or VS

## 1.2 Purpose

### UJ-225

- Improved playback DVD+R media which was recorded by SONY DVD Recorder.
- Optimization of track jump control for CD-RW.
- Improvement of recording quality for DVD-R DL.

### UJ-217

- Enhances Closed Captioning display.
- Enables the unit to download the New V-Chip/Regional Rating Table (RRT).

### UJ-205

- Modification to improve VHS Timer Recording.

### UJ-201

- ATSC level meter indication improvement with weak signal.
- Stops disc rotation when the **[EJECT]** button is pressed.

### UJ-196

- Countermeasure for occurred aging mode by remote control signal.
- Protection against Drive unit fuse blowing due to customer Disc condition.
- Improved HDMI function. (Depends on TV)
- Upgrade program for next generation drive.

### UJ-190

- When recording program of 5.1 channel audio, the center channel audio is not output.
- The title information of the recorded program is not displayed correctly.

### UJ-184

- Hang-up sometimes occurs using JPEG of RAM disc on "Direct Navigator".
- "Copying has been stopped" message is displayed on the "Status" screen.
- "oooooo" is indicated continuously on power off after malfunction occurs.
- DVD-Video is played back on indication of "oooooo" after power off using EZ-Sync.

## 2 Download Firmware

1) Left click on the **DOWNLOAD** icon for the DMR-EZ47 Firmware.

- **DMR-EZ47, DMR-EZ475 DVD Recorder Firmware**

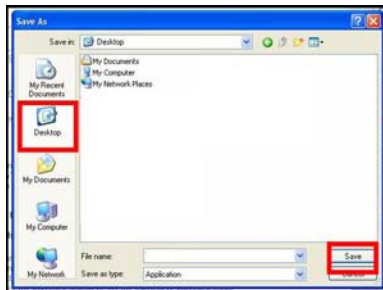


2) Left click on **SAVE**.



The file name displayed should be **PANA\_DVD.FRM**.

3) Left click on **DESKTOP**, and then left click on **SAVE**.



**NOTE: The PANA\_DVD.FRM file will be placed on the DESKTOP.**

### 3 Burn Firmware

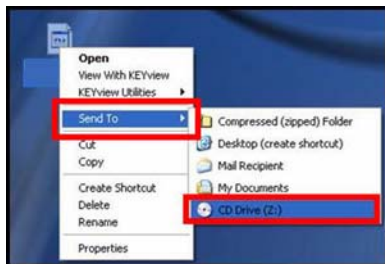
Use one of the below procedures to burn firmware to a CD-R disc.

#### 3.1 Windows® OS CD Writing Program

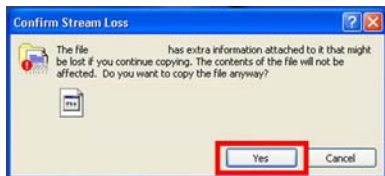
- 1) Insert a blank CD-R disc into a CD Burner Drive installed in or attached to the computer.
- 2) If the below (or similar) screen appears (Windows XP), left click on **CANCEL**.



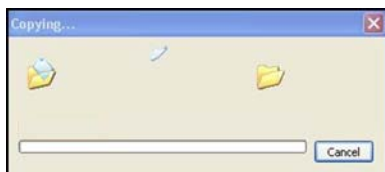
- 3) Right click on the **PANA\_DVD.FRM** file on the **DESKTOP**, mouse over **SEND TO**, and then left click on the **CD BURNER DRIVE**.



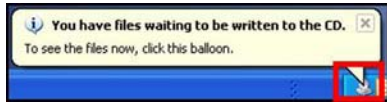
- 4) If the below screen appears, left click on **YES**.



**NOTE: The below screen may appear momentarily.**



5) Left click on the **YOU HAVE FILES WAITING TO BE WRITTEN TO THE CD** icon in the **SYSTEM TRAY**.



6) Left click on **WRITE THESE FILES TO CD**.



7) Type a name for the CD, check the **CLOSE THE WIZARD AFTER THE FILES HAVE BEEN WRITTEN** check box, and then left click on **NEXT**.



**NOTE: The below screen will appear during the burning process.**



8) After the **PANA\_DVD.FRM** file has been burned to the CD, the disc should automatically eject from the CD Burner Drive. If it doesn't, manually eject the disc.

### 3.2 Other OS CD Writing Program

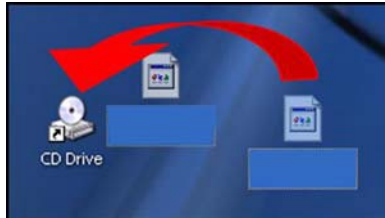
Refer to the computer's owner's manual or **HELP** files for instructions on how to copy the **PANA\_DVD.FRM** to a CD-R using the ISO-9660 format.

### 3.3 3<sup>rd</sup> Party CD Burning Software

Refer to the software application's owner's manual or **HELP** files for instructions on how to copy the **PANA\_DVD.FRM** to a CD-R using the ISO-9660 format.

### **3.4 Dragging & Dropping**

If an icon for the CD Burner Drive has been placed on the **DESKTOP**, left click on the firmware file, hold the left mouse button down, drag the file to the CD Burner Drive icon and release the left mouse button.



If using the Windows XP operating system, use procedure from **STEP 5** of **SECTION 3.1** on **PAGE 5 of 8**.

## 4 Install Firmware

**CAUTION:** Do not turn the DVD Recorder OFF or press any buttons on the DVD Recorder while the firmware update is in progress.

- 1) Power the DVD Recorder on.
- 2) Press the **[OPEN/CLOSE]** button to **OPEN** the disc tray.
- 3) Place the CD-R with the firmware update into the disc tray with the label side facing up.
- 4) Press the **[OPEN/CLOSE]** button to **CLOSE** the disc tray.

**NOTE:** If the firmware version in the unit is the same or higher than the firmware CD, **UNSUPPORT** may be displayed on the front panel. In this case, an update is unnecessary. Please remove the disc.



**NOTE:** If the firmware update will be installed, **BYE** will display on the front panel, the DVD Recorder will power off, and then power back on.



### NOTES:

- Several messages will be displayed on the front panel during the firmware update.
- When the firmware update is complete, the disc tray will automatically **OPEN**.



- 5) Remove the CD-R with the firmware update from the disc tray.
- 6) Without closing the disc tray, press the **[POWER]** button on the DVD Recorder to power the unit off. The disc tray will **CLOSE** automatically, display **BYE**, and then power off.
- 7) Unplug the power cord for at least 30 seconds, and then plug the power cord back in.
- 8) Press the **[POWER]** button on the DVD Recorder to power the unit on. (The unit will display **HELLO** and then begin the **FIRST TIME SETUP**.)

**NOTE:** If the unit does not begin the **FIRST TIME SETUP** automatically, it is recommended to initiate the **FIRST TIME SETUP**.

- Tune the DVD Recorder to a channel.
- Simultaneously press the **[CHANNEL UP]** and **[CHANNEL DOWN]** buttons on the front of the DVD Recorder for approximately 10 – 15 seconds (until the unit powers off).

- When the DVD Recorder is powered back on, the **FIRST TIME SETUP** screen should be displayed.
- 9) Follow the on-screen prompts to complete the **FIRST TIME SETUP**.